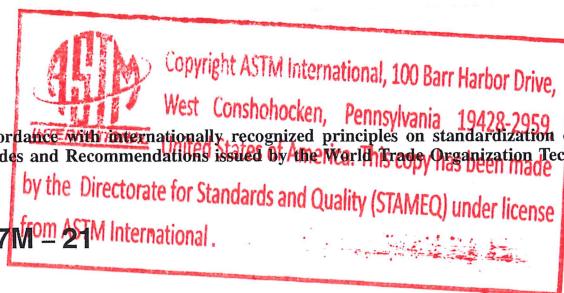




Designation: G7/G7M-21



Standard Practice for Natural Weathering of Materials¹

This standard is issued under the fixed designation G7/G7M; the number immediately following the designation indicates the year of original adoption or, in the case of revision, the year of last revision. A number in parentheses indicates the year of last reapproval. A superscript epsilon (ϵ) indicates an editorial change since the last revision or reapproval.

This standard has been approved for use by agencies of the U.S. Department of Defense.

1. Scope*

1.1 This practice covers procedures to be followed for direct exposure of materials to the environment. Typically, this testing is performed on exposure racks tilted at a commonly-used tilt angle from the horizontal (such as 5 or 45 degrees) and facing the equator. Other exposure orientations can be used.

1.2 This practice is not intended for the corrosion testing of bare metals, or for testing behind glass.

1.2.1 For corrosion testing, refer to Practice G50

1.2.2 For exposures behind glass, refer to Practice G24

1.3 *Units*—The values stated in either SI units or inch-pound units are to be regarded separately as standard. The values stated in each system are not necessarily exact equivalents; therefore, to ensure conformance with the standard, each system shall be used independently of the other, and values from the two systems shall not be combined.

1.4 This practice is technically equivalent to the parts of ISO 877-1 and -2 that describe direct exposures of specimens to the environment.

1.5 *This standard does not purport to address all of the safety concerns, if any, associated with its use. It is the responsibility of the user of this standard to establish appropriate safety, health, and environmental practices and determine the applicability of regulatory limitations prior to use.*

1.6 *This international standard was developed in accordance with internationally recognized principles on standardization established in the Decision on Principles for the Development of International Standards, Guides and Recommendations issued by the World Trade Organization Technical Barriers to Trade (TBT) Committee.*

2. Referenced Documents

2.1 ASTM Standards:²

- D3614 Guide for Laboratories Engaged in Sampling and Analysis of Atmospheres and Emissions
- E772 Terminology of Solar Energy Conversion
- E824 Test Method for Transfer of Calibration From Reference to Field Radiometers
- G24 Practice for Conducting Exposures to Daylight Filtered Through Glass
- G50 Practice for Conducting Atmospheric Corrosion Tests on Metals
- G113 Terminology Relating to Natural and Artificial Weathering Tests of Nonmetallic Materials
- G130 Test Method for Calibration of Narrow- and Broad-Band Ultraviolet Radiometers Using a Spectroradiometer
- G167 Test Method for Calibration of a Pyranometer Using a Pyrheliometer

2.2 ISO Standards:³

- ISO 877 Plastics—Methods of Exposure to Direct Weathering; to Weathering Using Glass-Filtered Daylight, and to Intensified Weathering by Daylight Using Fresnel Mirrors
- ISO 9370 Plastics—Instrumental Determination of Radiant Exposure in Weathering Tests—General Guidance and Basic Test Method
- ISO 9060:2018 Solar Energy – Specification and Classification of Instruments for Measuring Hemispherical Solar and Direct Solar Radiation

2.3 Other Standards:

- WMO – No. 8, “Guide to Meteorological Instruments and Methods of Observation,” seventh edition, World Meteorological Organization, Geneva, Switzerland, 2008

¹ This practice is under the jurisdiction of ASTM Committee G03 on Weathering and Durability and is the direct responsibility of Subcommittee G03.02 on Natural and Environmental Exposure Tests.

Current edition approved July 1, 2021. Published August 2021. Originally approved in 1969. Last previous edition approved in 2013 as G7/G7M-13. DOI: 10.1520/G0007_G0007M-21.

² For referenced ASTM standards, visit the ASTM website, www.astm.org, or contact ASTM Customer Service at service@astm.org. For *Annual Book of ASTM Standards* volume information, refer to the standard's Document Summary page on the ASTM website.

³ Available from American National Standards Institute (ANSI), 25 W. 43rd St., 4th Floor, New York, NY 10036, <http://www.ansi.org>.

*A Summary of Changes section appears at the end of this standard

3. Terminology

3.1 *Definitions*—The definitions given in Terminologies G113 and E772 are applicable to this practice.

4. Significance and Use

4.1 The relative durability of materials in natural exposures can be very different depending on the location of the exposure because of differences in ultraviolet (UV) radiation, relative humidity, time of wetness, temperature, wet-dry cycling, freeze-thaw cycling, pollutants, and other factors. Therefore, it cannot be assumed that results from one exposure in a single location will be useful for determining relative durability in a different location. Exposures in several locations with different climates which represent a broad range of anticipated service conditions are recommended.

4.2 Because of year-to-year climatological variations, results from a single exposure test cannot be used to predict the absolute rate at which a material degrades. Several exposures, repeated over several years are needed to get a representative test result for a given location.

4.3 Solar UV radiation varies considerably as a function of time of year. This can cause large differences in the apparent rate of degradation in many materials. Comparing results for

materials exposed for short periods (less than one year) is not recommended unless materials are exposed at the same time in the same location.

4.4 The duration of natural weathering tests is often based on time (24 months for example). The variability between different exposures can be reduced by using a duration based on total solar or solar UV radiant exposure. Solar UV measurements are typically made using instruments which record broadband UV (for example, 295 to 385 nm), as described in 7.2.4. An inherent limitation in timing a weathering test based solely on solar-radiation measurements is that temperature and moisture may also influence the rate or type of degradation.

4.5 The design of the exposure rack, the location of the specimen on the exposure rack, and the type, color, and emissivity of adjacent specimens can affect specimen temperature and time of wetness. In order to minimize variability caused by these factors, control and weathering reference material specimens should be placed adjacent to test specimens during exposure.

4.6 It is recommended that at least one control specimen be part of any exposure evaluation. When used, the control specimen shall meet the requirements of Terminology G113, and be of similar composition and construction compared to

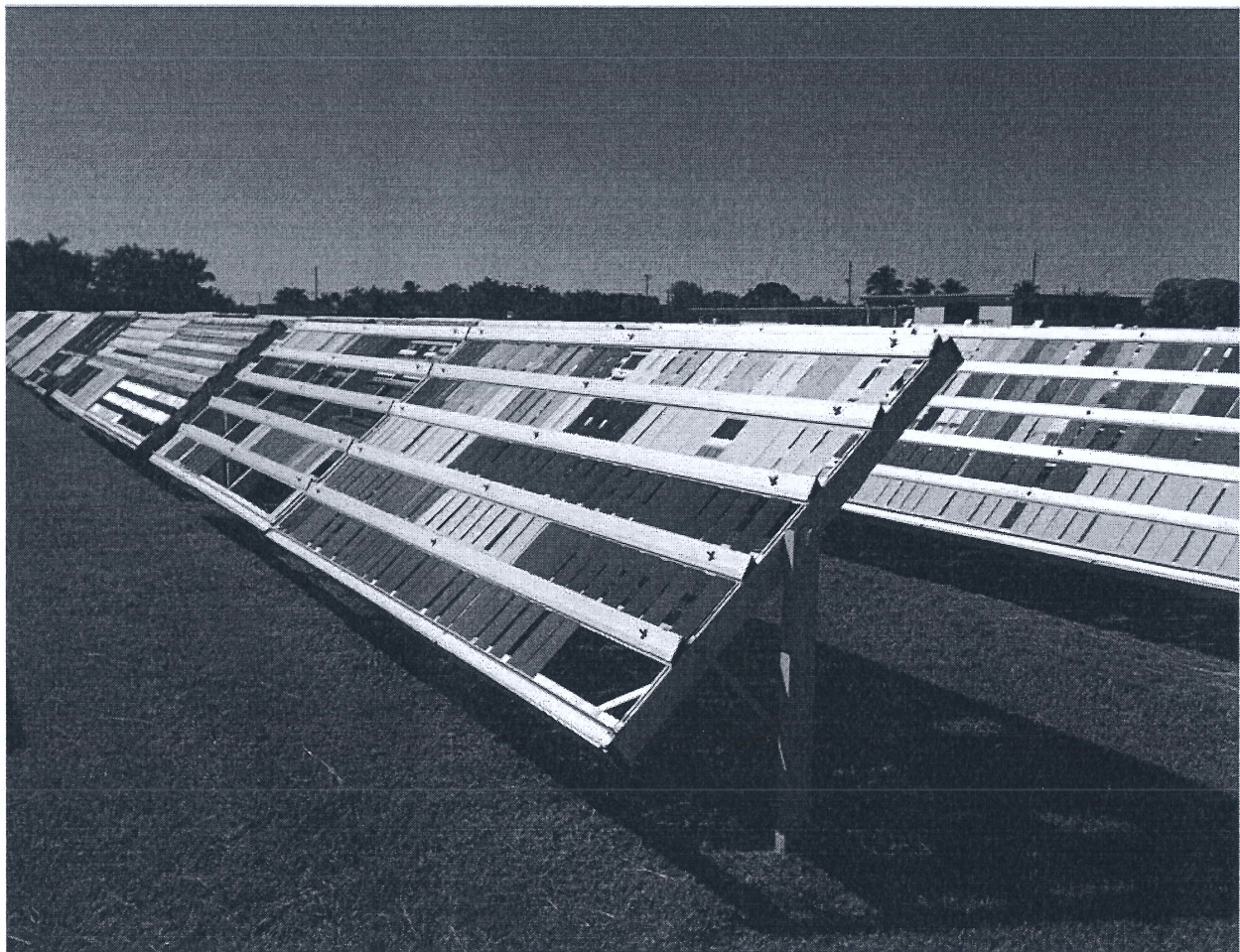


FIG. 1 Typical Exposure Rack

test specimens. It is preferable to use two control specimens, one with relatively good durability and one with relatively poor durability. Unless otherwise specified, use at least two replicate specimens of each test and control specimen being exposed. Control specimens included as part of a test shall be used for the purpose of comparing the performance of test specimens relative to the controls.

5. Test Sites, Location of Test Fixtures, and Exposure Orientation

5.1 *Test Sites*—Exposures can be conducted in any type of climate. However, in order to get more rapid indications of outdoor durability, exposures are often conducted in locations that receive high levels of solar radiation, temperature, and moisture. Typically, these conditions are found in hot desert and subtropical or tropical climates. Known attributes of the use environment should be represented by the locations selected for outdoor durability evaluation. For example, if the use environment for the product being evaluated will include freeze-thaw cycling, specimen exposure in a northern temperate climate is recommended. In addition, exposures are often conducted in areas where specimens are subjected to salt air (seashore) or industrial pollutants.

5.1.1 Unless otherwise specified, the area beneath and in the vicinity of the test fixtures shall have ground cover typical of the climatological area where the exposures are being conducted. In desert areas, the typical ground cover is often gravel to control dust, and in most temperate or subtropical areas, the typical ground cover is low-cut grass. The type of ground cover at the exposure site shall be indicated in the test report. If test fixtures are placed over ground covers not typical of the climatological area (for example, rooftops, concrete or asphalt), specimens may be subjected to different environmen-

tal conditions than if using typical ground cover or exposing at ground level. These differences may affect test results.

5.2 The lowest row of specimens on a test fixture or rack shall be positioned at least 0.45 m [18 in.] above the surface of the ground and shall not contact vegetation. This will also minimize the possibility that damage that might occur during grounds maintenance.

5.3 Test fixtures shall be placed in a location so that there is no shadow on any specimen when the sun's angle of elevation above the horizon is greater than 20°.

5.4 *Exposure Orientation*—Unless otherwise specified, exposure racks shall be oriented so that specimens face the equator. Specimens can be exposed at any orientation or "exposure angle" in order to simulate end-use conditions of the material being evaluated. Typical exposure angles are as follows:

5.4.1 *Latitude Angle*—Exposure rack is positioned so that the exposed surface of specimens are at an angle from the horizontal that is equal to the latitude of the exposure site and facing the equator.

5.4.2 45°—Exposure rack is positioned so that the exposed specimens are at an angle of 45° from the horizontal facing the equator. This is the most commonly used exposure orientation.

5.4.3 90°—Exposure rack is positioned so that the exposed specimens are at an angle of 90° from the horizontal facing the equator.

5.4.4 5°—Exposure rack is positioned so that the exposed specimens are at an angle of 5° from the horizontal facing the equator. This angle is preferred over horizontal exposure to avoid standing water on exposed specimens. This exposure angle typically receives the highest levels of solar radiant

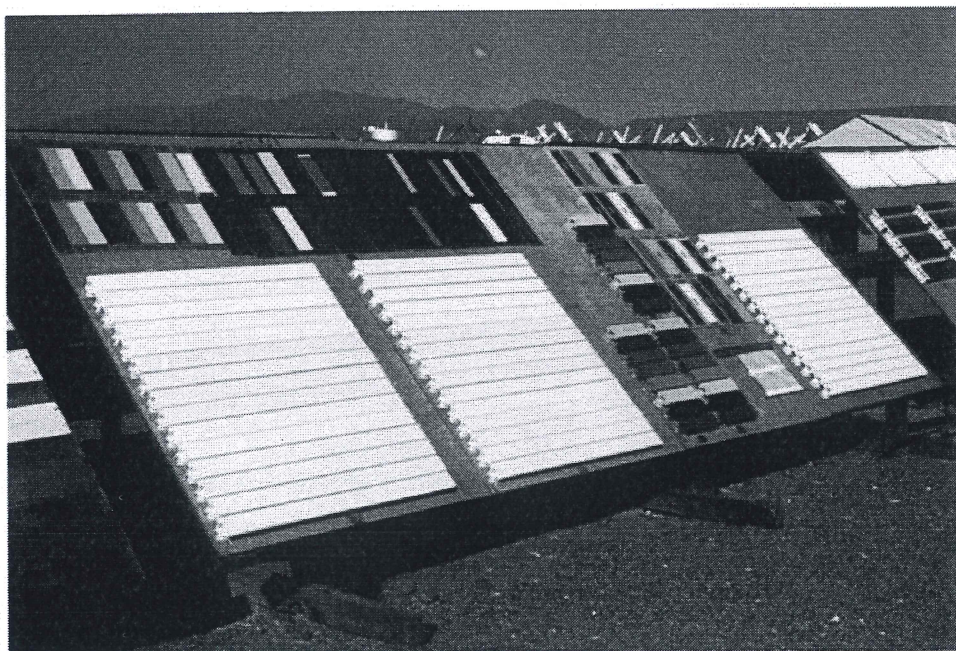


FIG. 2 Backed Exposure Rack

exposure during mid-summer and is used to expose materials that would normally be used in horizontal or nearly horizontal applications.

NOTE 1—Exposures conducted at less than the site latitude typically receive more UV radiant exposure than exposures conducted at larger angles.

5.4.5 Any other angle that is mutually agreed on by all interested parties may be used. In some instances, exposures facing directly away from the equator or some other specific direction may be desired. The test report shall contain the angle and specimen orientation.

5.5 *Specimen Backing*—Three types of specimen backing can be used. Avoid comparisons between materials degradation unless all exposures were conducted with the same specimen backing.

5.5.1 *Unbacked Exposures*—Specimens are exposed so that the portion of the test specimen being evaluated is subjected to the effects of the weather on all sides. For materials that deform easily during exposure, a wire mesh can be used to provide support and prevent deformation or distortion.

5.5.2 *Backed Exposures*—Specimens are attached to a solid substrate so that only the front surface is exposed. Surface temperatures of specimens in backed exposures will be higher than for specimens subjected to unbacked exposures. In some cases, the substrate is painted black, which produces significant differences in surface temperature compared to exposures conducted on unpainted substrates. This can cause large differences in degradation rates when compared to backed exposures conducted on unpainted substrates.

5.5.3 *Black Box Exposure*—Specimens are attached to the front face of a black painted aluminum box (see 6.2.3 and Fig. 3). The specimens form the top surface of the box. If there are not enough test specimens to completely cover the top surface, open areas shall be filled with black painted sheet metal panels so that the box is completely closed.

6. Construction of Test Fixtures (Exposure Racks)

6.1 *Materials of Construction*—All materials used for test fixtures shall be noncorrodible without surface treatment. Aluminum Alloys 6061T6 or 6063T6 have been found suitable for use in most locations. Properly primed and coated steel is suitable for use in desert areas. Monel has been found suitable in highly corrosive areas. Untreated wood is acceptable in desert areas but may pose maintenance problems in other areas. (See Fig. 1.)

6.1.1 For backed exposures (see 6.2.2 and Fig. 2), use exterior-grade plywood to form a solid surface to which specimens are directly attached. Replace the plywood when there is any warping or distortion that changes the orientation of the specimens, or when there are visible signs of delamination or fiber separation. Medium-density overlay (MDO) or high-density overlay (HDO) plywood types are satisfactory substrates and require less frequent replacement than plywood with no overlay. The edges of the plywood should be sealed with a durable paint to prevent delamination. The type and thickness of plywood used shall be described in the test report. Other substrates can be used if agreed upon between interested parties.

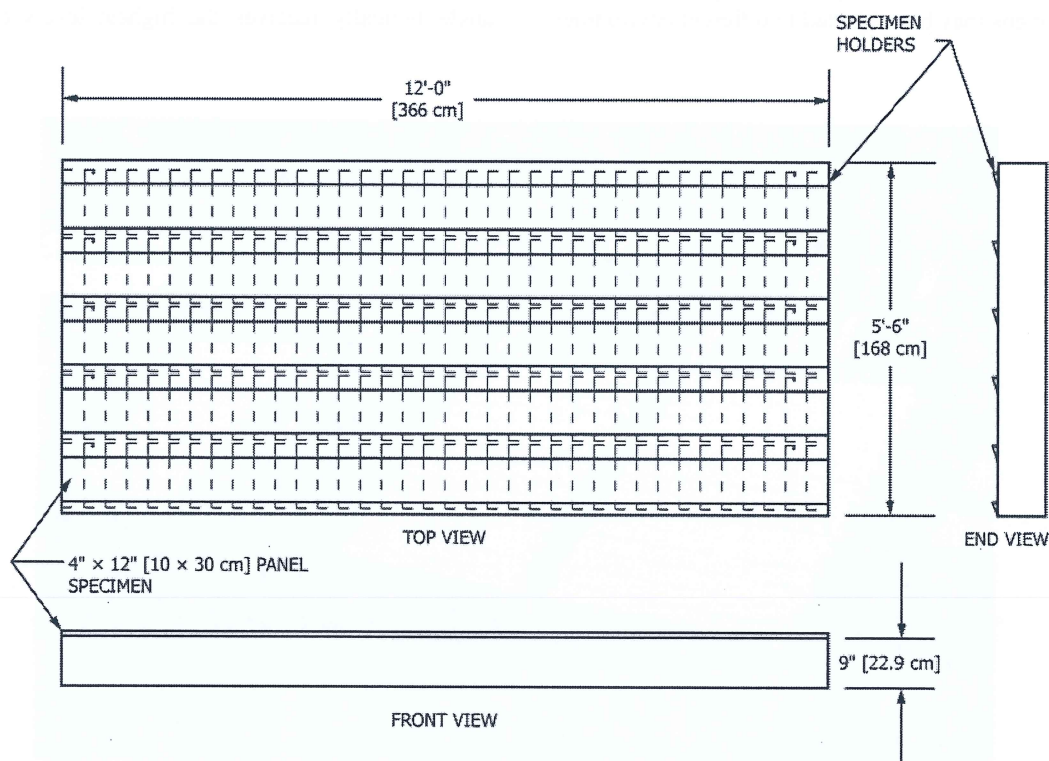


FIG. 3 Black Box

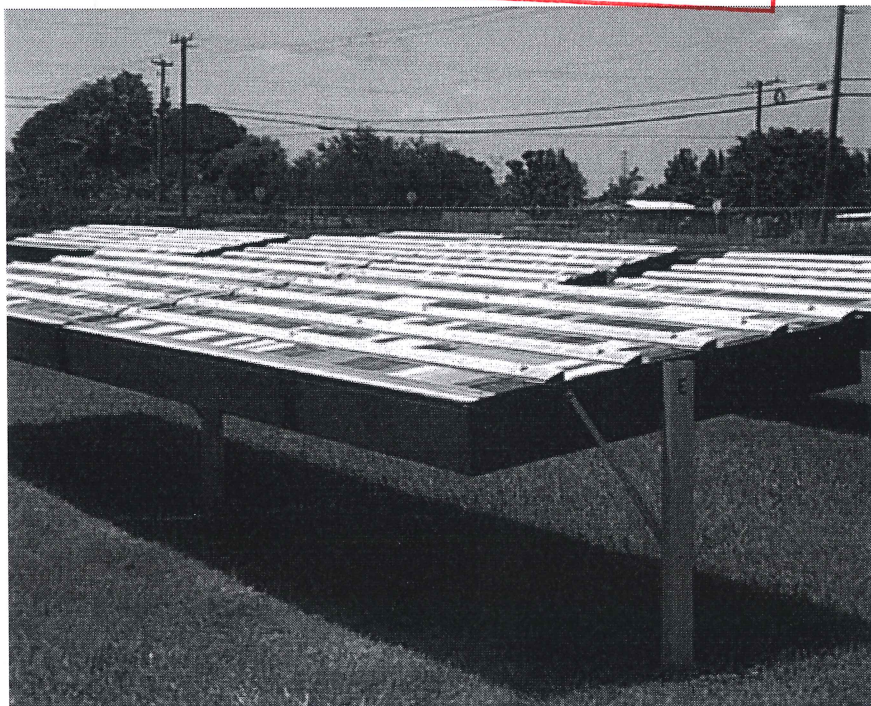


FIG. 4 Black Box in Use

6.2 *Test Fixture Design*—Test racks shall be constructed to hold specimens or specimen holders of any convenient width and length. Racks shall be constructed so that any contamination from specimens higher on the fixture cannot contaminate specimens in lower positions.

6.2.1 *Unbacked Exposures*—Test racks shall be constructed so that most of the test specimen is exposed to the effects of the weather on all sides. Specimens are attached to the test fixture at the top or bottom, or both, using clamping devices, properly spaced slots, or mechanical fasteners. The method of attachment shall not prevent expansion and contraction of specimens caused by temperature or moisture. Use fastening devices for attaching specimens to the test fixture that will not corrode, degrade, or contaminate the specimens. Aluminum, galvanized steel, or stainless-steel fasteners are recommended.

6.2.2 *Backed Exposures*—Test racks shall be constructed so that specimens are attached to a plywood substrate. The thickness of the plywood and type of coating used, if any, shall be agreed upon by all interested parties and must be reported.

NOTE 2—Backed exposures as described in this standard are not insulated exposures. For some applications such as outdoor exposure tests for roofing products, a layer of insulation material is attached behind the solid substrate to which specimens are attached. Insulated exposures of this type produce higher specimen temperatures than those that would be seen on backed exposures conducted according to this practice.

6.2.3 *Black Box Exposures*—An aluminum box 0.23 m [9 in.] deep with the outside surface painted black. The top surface is open and fitted with mounting strips to hold specimens firmly in place. Two types of black boxes are in common usage. One measures approximately 1.7 m [5.5 ft] high and 3.7 m [12 ft] wide and the other measures 1.5 m [5 ft] high and 1.8 m [6 ft] wide. Fig. 3 shows the design and dimensions for an acceptable black box. Fig. 4 shows a typical

black box in use. All exposure positions on a black box shall be filled with either test or control specimens or blank panels. Specimens for black box exposure which are not flat shall be attached to a flat panel before mounting in the exposure rack.

7. Instrumentation

7.1 Unless otherwise specified, instruments for determining climatological data during the exposure period shall be operated within 1000 m of the test racks. Data obtained shall be reported if requested as part of the results of a test.

7.2 Instruments for recording the following are recommended:

7.2.1 *Ambient Temperature (Daily Maximum and Minimum)*—Instruments used for recording ambient temperature shall be a thermocouple (Types T or J are recommended), a thermistor, or a resistance temperature device (RTD). Any instrument used shall have a current calibration traceable to a National Metrology Institute (NMI) and must be calibrated no less often than every twelve months. Instruments shall be mounted inside a white ventilated enclosure.

7.2.2 *Relative Humidity (Daily Maximum and Minimum)*—Instruments used for recording relative humidity must have a current calibration traceable to a National Metrology Institute (NMI). Instruments shall be mounted inside a white ventilated enclosure.

7.2.3 *Total Solar Radiation*—For measurement of total solar radiation, use a pyranometer meeting either ISO 9060:2018 Class A or B requirements or WMO (World Meteorological Organization) High Quality or Good Quality specification. Calibrate the pyranometer at the orientation and tilt angle planned for deployment. Modern pyranometer manufacturers recommend calibration intervals of two years but no more



frequent than once annually. Calibrate the pyranometer against an instrument traceable to the WRR (World Radiometric Reference). Perform this comparison either by comparison to a suitable reference pyranometer in accordance with Test Method E824 or by the direct shading disk calibration in accordance with Test Method G167. If at tilt calibrations are not available, correct for tilt angle effects in accordance with the instructions provided by the radiometer manufacturer. If requested, a certificate of calibration shall be provided with all total solar irradiance measurements.

NOTE 3—Most radiometers are calibrated and sold as systems, complete with read out means which show appropriate units. In such cases radiometers are calibrated in Wm^{-2} . Radiometers without direct read-out are typically calibrated in $\text{Wm}^{-2}\mu\text{V}^{-1}$.

NOTE 4—ISO 9370 also provides procedures for calibrating radiometers used for measuring total solar or solar ultraviolet radiation.

7.2.4 Total Solar Ultraviolet Radiation—For measurement of total solar UV radiation, use a radiometer that measures UV radiation in the wavelength region from 295 to 385 nm. The total solar UV radiometer shall have a current calibration against a standard source of spectral irradiance traceable to a National Metrology Institute (NMI). The instrument used to measure total solar UV radiation shall be calibrated at least annually. Test Method G130 describes calibration of narrow and broad-band UV radiometers using a spectroradiometer. Furthermore, transfer of calibration from reference to field radiometer can be performed in accordance with Test Method E824. The calibration shall be in suitable radiometric units, preferably in watts per square meter per volt ($\text{Wm}^{-2}\text{V}^{-1}$). If requested, a certificate of calibration shall be provided with all total solar UV irradiance measurements.

NOTE 5—Traditionally, UV radiometers measuring 295 to 385 nm have been used. Use of radiometers with different integrated wavelength responses (for example, those that respond to 400 nm) can result in recorded UV radiant exposures that will be different.

7.2.5 Narrow-Band Solar UV Radiation—Though not common, narrowband radiometers can be used to measure specific wavelength bands of solar UV radiation in the UVB or UVA regions. Unless otherwise specified, the narrow-band radiometers shall have a current calibration against a standard source of spectral irradiance at least annually. The calibration shall be in suitable radiometric units, preferably in watts per square meter per volt ($\text{Wm}^{-2}\text{V}^{-1}$). If requested, a certificate of calibration shall be provided with all narrow band solar UV irradiance measurements.

7.2.6 Time of Wetness—Times of wetness can be reported if the method is specified, used and agreed upon by interested parties.

7.2.7 Measurement of Air Quality—General guidance for sampling and analysis of ambient air quality can be found in Guide D3614.

8. Specimen Preparation

8.1 Prepare test specimens according to standards or procedures relevant to the materials being evaluated.

8.1.1 Identify each specimen with a unique mark that will not be destroyed or become illegible during the exposure.

8.2 If nondestructive testing is used, measure the desired properties on all test and reference and control specimens prior to exposure.

8.2.1 If destructive testing is done, measure the level of the desired property on a separate set of specimens. When destructive tests are used, separate sets of specimens are needed for each exposure period desired.

9. Test Procedure

9.1 Select one of the following methods for defining the duration of exposure:

9.1.1 *Calendar Basis*—Expose specimens for a specified number of days, months, or years. The report shall indicate the exact dates and duration of the exposure.

9.1.2 *Radiant Exposure Basis*—Expose specimens until a specified level of solar radiant exposure is achieved. Use hemispherical radiation measurements (direct plus scattered solar radiation) as the basis for determining the radiant exposure. The wavelength region in which the solar radiation is measured must be specified. The instruments used to measure radiation shall meet the requirements of 7.2.3 – 7.2.5. The report shall indicate the radiant exposure, wavelength range in which it was measured, and exact dates, if appropriate, of the exposure.

9.1.3 *Deterioration Basis*—Expose specimens until a specified physical or optical change has occurred. The report shall indicate the property used as a basis for evaluating the exposure, the method used to measure the property, the initial and final values of the desired property, and the exact dates and duration of the exposure.

9.1.4 *Based on Property Change in Weathering Reference Material*—With this procedure, a weathering reference material shall be exposed with the test specimens. Expose until a specified change has occurred in the weathering reference material. The report shall describe the weathering reference material used, the property used as a basis for defining the exposure, the method used to measure the property, the initial and final values of the measured property of the weathering reference material, and the exact dates of the exposure.

10. Report

10.1 Report the following information with reference to exposures conducted according to this practice:

10.1.1 Complete description of the test specimens and any control and weathering materials used, including:

10.1.1.1 Composition, if available from the material producer.

10.1.1.2 Method of preparation (referencing applicable standards) if known,

10.1.2 Location of exposure (including whether specimens were exposed at ground level, on a rooftop, and so forth),

10.1.3 Ground cover in area of test racks,

10.1.4 Angle at which exposure conducted. If the exposure rack is not facing the equator, specify the azimuth angle east or west of true south (northern hemisphere) or true north (southern hemisphere),

10.1.5 Type of exposure (unbacked, backed, or black box). If backed exposure is used, include thickness and type of

backing and, if painted, the color of paint used. If available, also report absorbance and emissivity.

10.1.6 Method of mounting, including description of supports if needed,

10.1.7 Date exposure started and date exposure completed,

10.1.8 If required, solar radiant exposure determined according to 7.2.3 – 7.2.5, including wavelength range in which radiant exposure is measured. If required, include a certificate of calibration for the radiometer used, with this information, and

10.1.9 If used, details of any specimen treatment such as washing conducted during the exposure. This shall include description of the treatment used and the frequency of treatment.

10.1.10 Report any deviations from this practice.

10.1.11 If required, report the following daily climate information:

10.1.11.1 Ambient temperature (maximum and minimum),

10.1.11.2 Relative humidity (maximum and minimum),

10.1.11.3 Total hours of wetness and method used to measure,

10.1.11.4 Rainfall in millimeters,

10.1.11.5 Concentration of pollutants such as NO₂, SO₂, O₃, and method used to measure the concentration, and

10.1.12 Results of property measurements if required or conducted before and after exposure. This shall include a description of the method used to measure the property.

11. Precision and Bias

11.1 Precision:

11.1.1 Repeatability and reproducibility of results obtained by this practice will vary depending on the materials being tested, the material property being measured, the climate in which the exposures are conducted, and year-to-year differences in climate at a single location. Therefore, no specific statement about the absolute precision of the results obtained by this practice can be made.

11.1.2 Because of the potentially high absolute variability in results obtained by this practice, it is best that performance requirements be specified in terms of comparison with a control material. This control material shall be exposed simultaneously with the test specimen. The specific control material used must be agreed upon by all interested parties.

11.2 *Bias*—Bias in results obtained according to this practice will vary with the materials being tested, the material property being measured, the climate in which the exposures are conducted, and year-to-year differences in climate at a single location. In addition, no acceptable standard reference materials are available for the myriad of material weathering property responses.

12. Keywords

12.1 durability; exposure; weathering

SUMMARY OF CHANGES

Committee G03 has identified the location of selected changes to this standard since the last issue (G7/G7M – 13) that may impact the use of this standard.

(1) Changed the title to “Natural Weathering of Materials”. The old title was “Atmospheric Environmental Exposure Testing of Nonmetallic Materials”.

(2) In 1.1, for corrosion testing, the user of this practice is referred to Practice G50.

(3) An adjunct that contained a drawing of an exposure rack was deleted from this practice.

(4) In 6.1.1, a statement was inserted requiring that the type and thickness of a backing used for a backed exposure be reported.

(5) In 6.2.3, a requirement was added that specimens which are not flat be mounted onto flat specimens before testing.

(6) In 7.2.3, the calibration frequency was changed from at least annually to at least every 2 years.

(7) In 7.2.6, Practice G84 was removed as a recommended practice for measuring time of wetness.

(8) In 7.2.7 and 10.1.11.5, guidance for optional reporting of air quality was added.

(9) Section 8 (Specimen Preparation) was added.

ASTM International takes no position respecting the validity of any patent rights asserted in connection with any item mentioned in this standard. Users of this standard are expressly advised that determination of the validity of any such patent rights, and the risk of infringement of such rights, are entirely their own responsibility.

This standard is subject to revision at any time by the responsible technical committee and must be reviewed every five years and if not revised, either reapproved or withdrawn. Your comments are invited either for revision of this standard or for additional standards and should be addressed to ASTM International Headquarters. Your comments will receive careful consideration at a meeting of the responsible technical committee, which you may attend. If you feel that your comments have not received a fair hearing you should make your views known to the ASTM Committee on Standards, at the address shown below.

This standard is copyrighted by ASTM International, 100 Barr Harbor Drive, PO Box C700, West Conshohocken, PA 19428-2959, United States. Individual reprints (single or multiple copies) of this standard may be obtained by contacting ASTM at the above address or at 610-832-9585 (phone), 610-832-9555 (fax), or service@astm.org (e-mail); or through the ASTM website (www.astm.org). Permission rights to photocopy the standard may also be secured from the Copyright Clearance Center, 222 Rosewood Drive, Danvers, MA 01923, Tel: (978) 646-2600; <http://www.copyright.com/>

